

GET THE BLUE CHIP OFF YOUR SHOULDER

Our Ex-20 Australian Equities Fund offers exposure to forward-looking companies by investing in a portfolio of stocks that sit outside the S&P/ASX 20. This provides more diversity, superior returns and strong growth potential over the medium to long term.



Higher returns

Focussing on the Ex-20 universe of stocks provides us with greater opportunities to exploit inefficiencies that deliver higher total returns with less volatility than the ASX 20.



Lower concentration risk

The Fund offers a cost-effective core building block to supplement a typical portfolio, with high exposure to the top 20 companies dominated by financials and resources.



Diversified investments

The Ex-20 Index offers investment opportunities across an even spread of sectors. This provides access to daily liquidity and a diverse, balanced investment universe.

Fund objective

The Fund aims to achieve medium-to-long term capital growth through exposure to ASX listed securities, excluding those featured in the S&P/ASX 20 Index. It also seeks to outperform the S&P/ASX 300 ex S&P/ASX 20 Accumulation Index over rolling three-year periods.

Investment horizon	Long term (5–7+ years)
Target return	S&P/ASX 300 ex S&P/ASX 20 Accumulation Index
Number of securities	15–35
Inception date	August 2010
Minimum investment	\$50,000
Fees (ICR)	0.90% p.a.
Distribution	Semiannually

“

**A true portfolio
diversifier, offering
differentiated alpha
opportunities outside
the top 20, with lower
fees than small and
mid cap funds.¹**



How we invest

To deliver strong and consistent risk-adjusted returns, we use proprietary research and a portfolio construction process that balances risk and reward. This creates a higher conviction and differentiated portfolio that provides a more consistent performance.



Insight-driven stock picking

Our large team of experts undertake rigorous fundamental and bottom-up qualitative research on the financial positioning, management quality and industry outlook of companies across different sectors to uncover sources of alpha.



Disciplined risk management

To avoid concentration risk and maximise flexibility, no holding represents more than 6% of the portfolio. We limit overweight stock positions to below 15% and sector positions to less than 20% of total risk within the portfolio.²

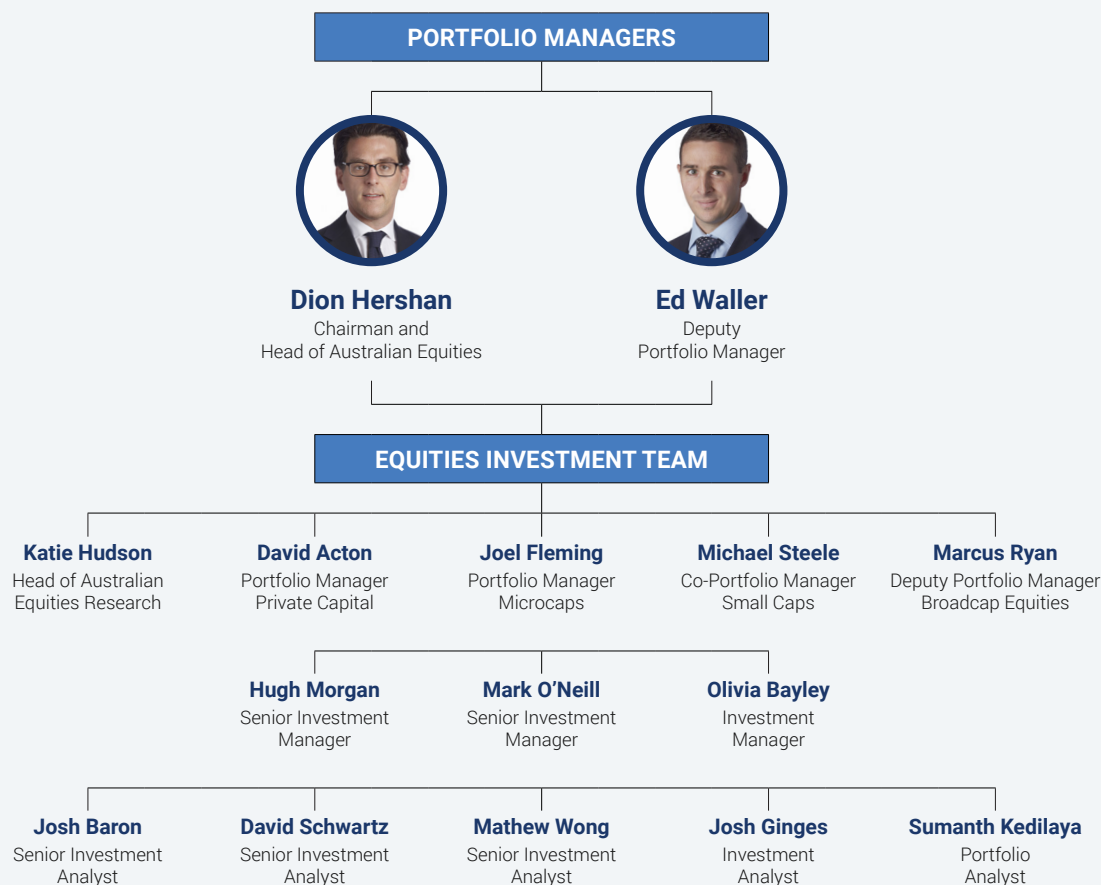


Balanced portfolio construction

To deliver a consistent performance through market cycles, we apply a balanced approach without a growth or value bias. The use of short and long-dated ideas means we can capture opportunities across different timeframes and thoroughly assess risk and reward on every stock.

Meet the team

Portfolio manager Dion Hershan leads the Fund, supported by a 28-strong research and investment team that covers equities, fixed interest, macro and strategy, and ESG.



About us

Yarra Capital Management is a leading independent, active Australian fund manager with a strong heritage in the local market.

With \$21 billion of AUM,³ we have an established track record in all market conditions.

We offer a range of actively managed fundamental equities, fixed income and multi-asset solutions, and our Australian equity funds span large cap through to microcap strategies.

Discover more at yarracm.com

Contact us

+61 2 8072 6300
sales.au@yarracm.com





1. Over all time periods the Ex20 index has delivered strong returns at lower volatility than small and mid cap indices. As at 31 December 2024. Source: Factset and S&P. **2.** Defined as % contribution to portfolio tracking error. **3.** As at 31 December 2024.

This material is distributed by Yarra Funds Management Limited (ABN 63 005 885 567, AFSL 230 251) and is intended for viewing only by wholesale clients for the purposes of section 761G of the Corporations Act 2001 (Cth). This document may not be distributed to retail clients in Australia (as that term is defined in the Corporations Act 2001 (Cth)) or to the general public. This document may not be reproduced or distributed to any person without the prior consent of Yarra Funds Management Limited. The information set out has been prepared in good faith and while Yarra Funds Management Limited and its related bodies corporate (together, the "Yarra Capital Management Group") reasonably believe the information and opinions to be current, accurate, or reasonably held at the time of publication, to the maximum extent permitted by law, the Yarra Capital Management Group: (a) makes no warranty as to the content's accuracy or reliability; and (b) accepts no liability for any direct or indirect loss or damage arising from any errors, omissions, or information that is not up to date. No part of this material may, without the Yarra Capital Management Group's prior written consent be copied, photocopied, duplicated, adapted, linked to or used to create derivative works in any form by any means.

To the extent that this document discusses general market activity, industry or sector trends, or other broad based economic or political conditions, it should be construed as general advice only. Past performance is not an indication of, and does not guarantee, future performance. Past performance does not guarantee future results, which may vary. The value of investments and the income derived from investments will fluctuate and can go down as well as up. A loss of principal may occur. There is no guarantee that objectives will be met. To the extent it includes references to specific securities, those references do not constitute a recommendation to buy, sell or hold such security. Yarra Funds Management Limited believes that the information contained in this document is correct and that any estimates, opinions, conclusions or recommendations contained in this document are reasonably held or made as at the time of publication.

There can be no assurance that any targets stated in this document can be achieved. Please be advised that any targets shown are subject to change at any time and are current as of the date of this document only. Targets are objectives and should not be construed as providing any assurance or guarantee as to the results that may be realized in the future from investments in any asset or asset class described herein. If any of the assumptions used do not prove to be true, results may vary substantially. These targets are being shown for informational purposes only. Whilst we seek to design portfolios which will reflect certain risk and return features such as sector weights and capitalization ranges, by accepting the document as a wholesale client you are taken to understand that such characteristics of the portfolio, as well as its volatility, may deviate to varying degrees from those of the benchmark.

For distribution only to financial institutions, financial services licensees and their advisers. Not for viewing by retail clients or members of the general public. © 2025 Yarra Capital Management.